

Geographic Calculator's data source includes:

- More than 5,000 pre-defined projected coordinate systems
- More than 1,800 coordinate transformations
- More than 500 horizontal datums
- More than 150 vertical datums (necessary for Lidar transformations)
- More than 80 various unit definitions
- Full matches to ESRI, MapInfo, and Autodesk
- Custom coordinate systems



geocalc geodetic registry

Did you know about Blue Marble Geographics's online repository for managing coordinate reference system definitions and transforming coordinates in the cloud? Try geocalconline.com.

Software Training

Customized Sessions

A tailored curriculum focused on the needs of a company or organization

Public Sessions

A hands-on class for GIS pros and beginners

Self-Guided Sessions

Downloadable series of instructions and GIS data for learning at one's own pace

Technical Support

Email our Tech Team:

geohelp@bluemarblegeo.com

Subscribe to our YouTube Channel:

youtube.com/user/BlueMarbleWebinars

Other Resources

Our Knowledge Base:

bluemarblegeo.com/knowledgebase/

The Global Mapper Forum:

globalmapperforum.com

About Blue Marble

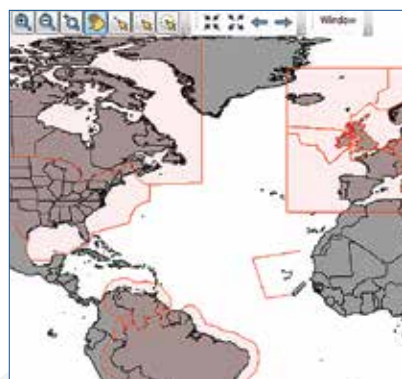
Blue Marble Geographics® is a geodetic and GIS software company that provides cutting-edge yet affordable products designed for both novice and experienced geospatial professionals. Blue Marble's expertise spans a broad spectrum of the geospatial technology sector with a particular focus on coordinate conversion, Lidar and photogrammetric point cloud processing, geospatial software development kits, and user-driven product development.

bluemarblegeo.com

Geographic Calculator® — coordinate transformation software designed to ensure accuracy in any geospatial data management process.

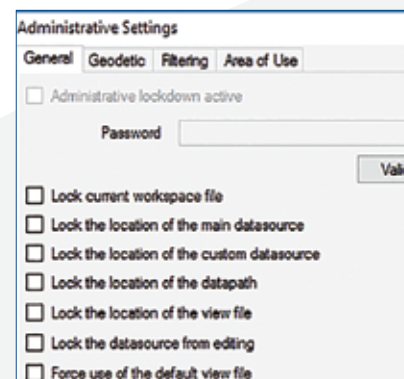
Powerful coordinate conversion and datum transformation

Geographic Calculator® is a powerful geodetic software for coordinate conversion and datum transformation. In addition to single point, point database, and file conversion tools, this highly accurate transformation software includes many specialized tools. It supports a wide range of file formats, and is built on the foundation of the largest geodetic parameter database available anywhere.



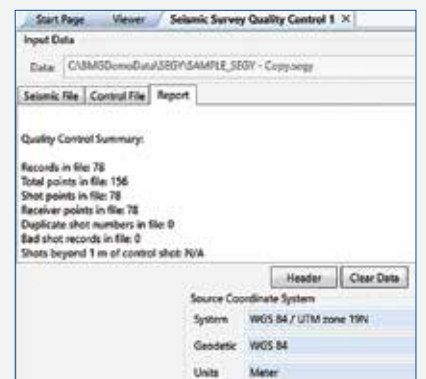
Area of Use Polygons

"Area of Use" polygons for coordinate systems and transformations allow for automating or guiding users selection of the best available parameters



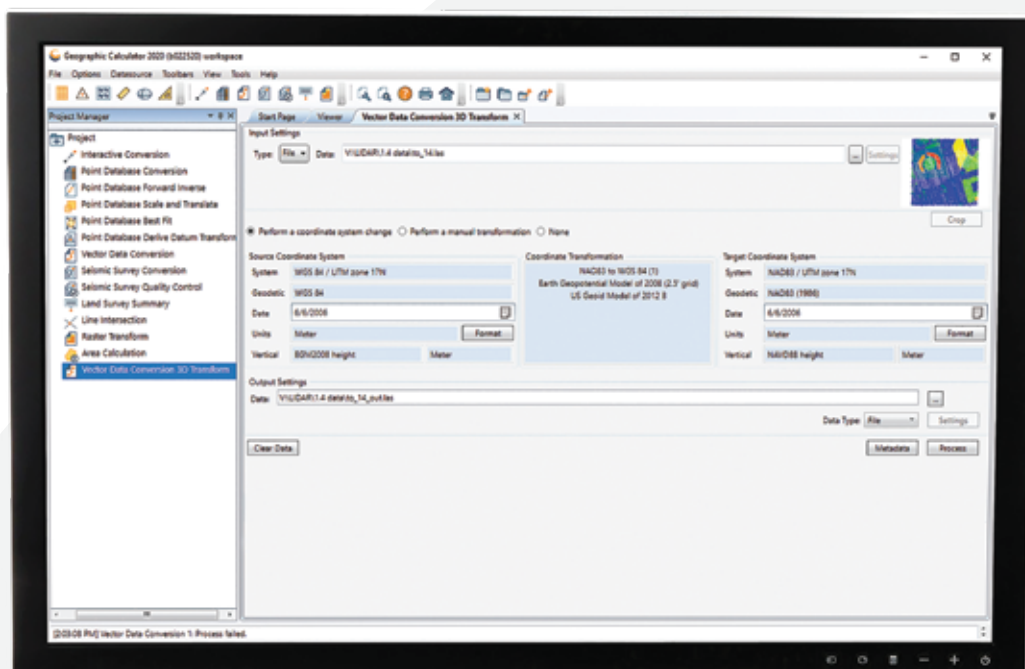
Customizable Administrative Tools

Tools to establish standard coordinate system and transformation parameters that can be easily deployed to all users



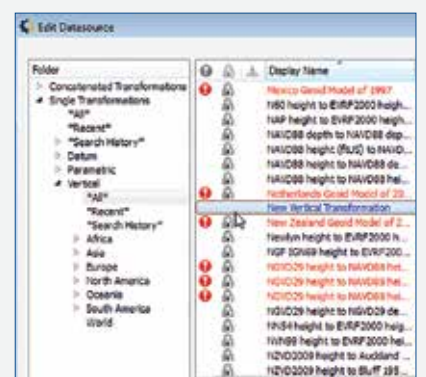
Seismic Survey Quality Control

Efficient conversion of SEG, SPS, P1-11, and UKOOA files, as well as quality checks on preplot and poststack seismic lines



Time-Dependent Transformation

Support for Horizontal Time-Dependent Positioning for North America and 14 parameter transformations that provide the means to account for and adjust positions related to tectonic movement



3D Coordinate Support

Supports vertical coordinate systems and transformations, enabling accurate 3D data processing, including use of Global Mapper to create custom geoids

Are you ready for NATRF2022?

Geographic Calculator is. When transformations have to be correct, consistent, and certifiable, GIS professionals around the world choose Geographic Calculator — when close isn't close enough.