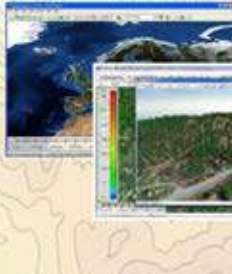


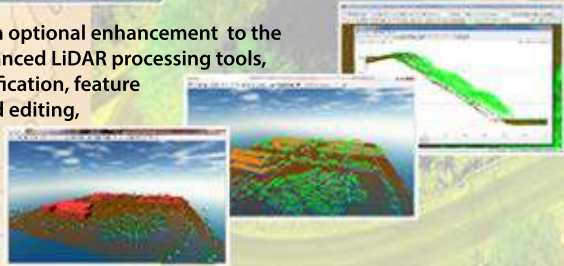
**Global Mapper™**



Global Mapper is an affordable and easy-to-use GIS application that offers access to an unparalleled variety of spatial datasets and provides just the right level of functionality to satisfy both experienced GIS professionals and beginning users.

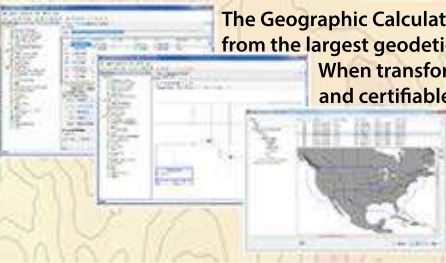
**LIDAR Module**

The Global Mapper LiDAR Module is an optional enhancement to the software that provides numerous advanced LiDAR processing tools, including automatic point cloud classification, feature extraction, cross-sectional viewing and editing, dramatically faster surface generation, and much more.



**Geographic Calculator**

The Geographic Calculator supports a wide range of file formats with support from the largest geodetic parameter database available anywhere. When transformations have to be correct, consistent and certifiable, GIS professionals around the world choose the Geographic Calculator.



Enterprise EHS software to manage your compliance & sustainability from anywhere, anytime.



Automate your environmental compliance activities so you can focus on business improvements— with cloud EHS software for better data, more powerful reporting tools, and maximum long-term value.

Ready for an all-in-one EHS software solution

- Improve your data quality and accessibility.
- Save time and identify cost-reducing opportunities.
- Forecast environmental compliance and sustainability metrics.

Get the environmental software that transforms your compliance & sustainability data into insights. Minimize operational risk and start making better decisions— with a complete EHS management system in the true multi-tenant cloud.

